



Odak
CONTROL VALVES

LIMITOR®
VALVE ACTUATORS

VALVE ACTUATORS
CONTROL VALVES
BUTTERFLY VALVES
GAS DAMPERS
PENSTOCKS

ENDÜSTRİ KONTROL MAKİNA SANAYİ TİC. LTD.ŞTİ.

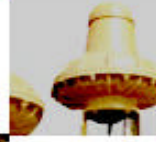
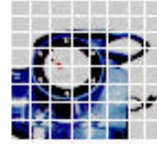
HOME



ODAK Limator® Control Valves & Actuators

ODAK Co.Ltd. is a Turkish company specialized in design and production of control valves and valve actuators since 1986. Our trade marks are Odak for valves and Limator for actuators. Our electric valve actuators have many advantages relative to classical manual valve drivers.

ODAK Valvemotorize Service Team visits your plant and takes measurements to adapt the appropriate LIMITOR® electric actuator. Then our technical service specifies operating and control requirements, after designing adequate connection type, installs and commissions the system.



PRODUCTS

We have a wide range of automatically controlled valves. Below is our off-the-shelf product list but please do not hesitate to contact us via e-mail or simply fill out our guestbook for your custom needs.

∴ HOME

- .: [CONTACT](#)
- .: [PRODUCTS](#)
- .: [TOP LOGO](#)
- .: [APPLICATIONS](#)
- .: [REFERENCES](#)
- .: [NEWS](#)



Single/Double Seat Control Valve

SINGLE / DOUBLE SEAT CONTROL VALVE



Technical Specifications	
Type	OD 111 / 112
Flow Control	Proportional, on-off
Size	DN 15 to DN 300
Connection	PN 10 to PN 40
Body	Cast iron, cast steel
Trim	Stainless steel
Actuator	Pneumatic, electric
Accessories	Positioner, limit switch, 4-20ma feedback

- .: [PRODUCTS](#)
- .: [APPLICATIONS](#)
- .: [REFERENCES](#)
- .: [NEWS](#)

Ball Control Valve

BALL CONTROL VALVE



Technical Specifications	
Type	OD 16
Flow Control	Proportional, on-off
Size	DN 15 to DN 200
Connection	PN 10 to PN 40
Body	Cast iron, cast steel
Disk	Stainless steel
Shaft	Stainless steel
Actuator	Pneumatic, electric
Accessories	Positioner, limit switch

.: [PRODUCTS](#)

.: [APPLICATIONS](#)

.: [REFERENCES](#)

.: [NEWS](#)

Butterfly Control Valve

BUTTERFLY CONTROL VALVE



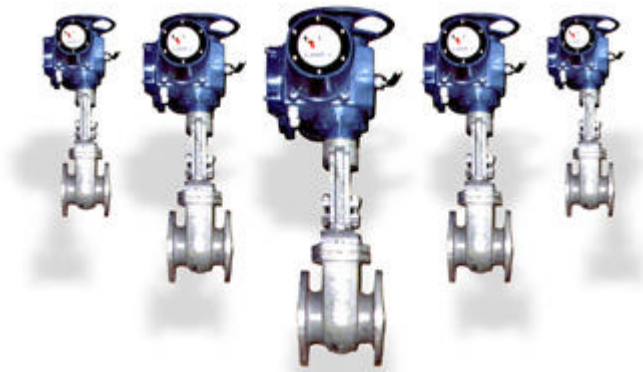
Technical Specifications	
Type	OD 61 Wafer
Flow Control	Proportional, on-off
Size	DN 15 to DN 600
Connection	PN 10 to PN 16
Body	Cast iron, GGG
Disk	GGG, Stainless steel
Shaft	Stainless steel
Lining	Epdm
Actuator	Pneumatic, electric
Accessories	Positioner, limit switch



-
- .. [PRODUCTS](#)
 - .. [APPLICATIONS](#)
 - .. [REFERENCES](#)
 - .. [NEWS](#)
-

Gate Valve with Actuator

GATE VALVE WITH ACTUATOR



Technical Specifications	
Type	OD 41
Flow Control	On-off
Size	DN 40 to DN 600
Connection	PN 10 to PN 25
Body	Cast iron
Disc	Cast iron
Actuator	Manual, electric, hydraulic
Accessories	4-20mA driver, 4-20mA position transmitter

:: [PRODUCTS](#)

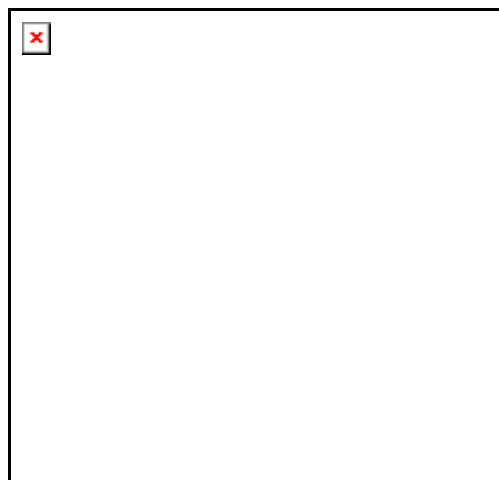
:: [APPLICATIONS](#)

:: [REFERENCES](#)

:: [NEWS](#)

Sluice Gate Valve with Actuator

SLUICE GATE VALVE WITH ACTUATOR



Technical Specifications	
Type	OD 50 Square, Circular
Flow Control	On-off
Size	Maximum 4000x6000mm.
Pressure	Maximum PN 10
Body	Steel fabrication
Disc	Steel fabrication
Actuator	Manual, electric, hydraulic
Accessories	4-20mA transmitter

.: [PRODUCTS](#)

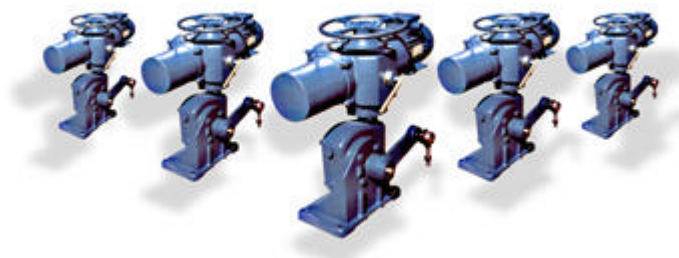
.: [APPLICATIONS](#)

.: [REFERENCES](#)

.: [NEWS](#)

Actuator for Dampers

ACTUATOR FOR DAMPERS



Technical Specifications	
Type	Limiter + S2
Operation	On-off, proportional
Torque	From 40 Nm to 40.000 Nm
Output	From 0.25 rpm to 2 rpm
Actuator	Electric
Accessories	4-20 mA driver, 4-20 mA position transmitter

.: [PRODUCTS](#)

.: [APPLICATIONS](#)

.: [REFERENCES](#)

.: [NEWS](#)

Two Lever Shut-off Valve

TWO LEVER SHUT-OFF VALVE



Technical Specifications

Type	OD 60
Shape	Square or circular
Flow Control	On-off, tight shut-off
Size	Maximum 4000mm x 4000mm.
Pressure	Differential pressure up to 0.5 bar
Temperature	Up to 500°C
Body	Steel fabrication
Disc	Steel fabrication
Actuator	Manual, Electric, Hydraulic
Accessories	4-20mA transmitter

.: [PRODUCTS](#)

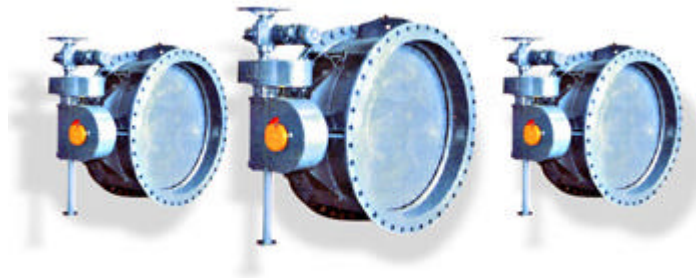
.: [APPLICATIONS](#)

.: [REFERENCES](#)

.: [NEWS](#)

Butterfly Valve with Actuator

BUTTERFLY VALVE WITH ACTUATOR



Technical Specifications	
Type	OD 62
Flow Control	Proportional, on-off
Size	DN 100 to DN 3500
Connection	PN 4 to PN 40
Body	Cast iron, GGG, Welded construction
Disc	GGG, Welded construction
Shaft	Steel, stainless steel
Actuator	Manual, Electric, Hydraulic
Accessories	4-20mA driver, 4-20mA position transmitter

.: [PRODUCTS](#)

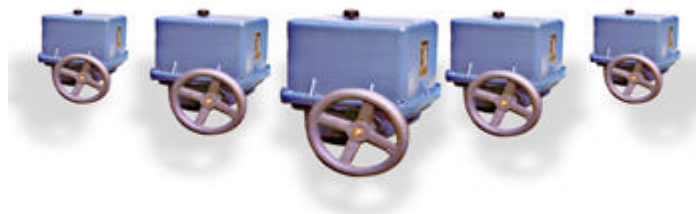
.: [APPLICATIONS](#)

.: [REFERENCES](#)

.: [NEWS](#)

Limitor-K Electric Actuator

LIMITOR-K ELECTRIC AKTUATOR



Technical Specifications	

Type	Limiter-K
Rotation	Quarter turn
Time for 90°	20 sec. - 120 sec.
Torque	55 Nm - 1600 Nm
Voltage	220 V - 380 V
Motor Power	0.18 kW - 0.5 kW
Rotation Control	Limit+Torque Switches
Protection	Max. IP 65
Indicator	Yes
Handwheel	Automatic

.: [PRODUCTS](#)

.: [APPLICATIONS](#)

.: [REFERENCES](#)

.: [NEWS](#)

Limiter-M Electric Actuator

LIMITOR-M ELECTRIC AKTUATOR



Technical Specifications	
Type	Limiter-M
Rotation	Quarter turn
Time for 90°	15 sec. - 120 sec.
Torque	10 Nm - 50 Nm
Voltage	24 v - 220 v
Motor Power	2 - 15 watt
Rotation Control	Limit switches
Protection	IP 65
Indicator	Optional

:: PRODUCTS

:: APPLICATIONS

:: REFERENCES

:: NEWS

APPLICATIONS

APPLICATIONS

Our valves and actuators have a wide range of usage. Following, you may find some of the applications that our valves and actuators may be used.

- Every kind of process control applications and valves.
- Shut off applications.
- Remote controlling of valves.
- Man power saving.
- Centralized control.
- Safety.
- Reliability.
- Less work.
- More production.



NEWS

ODAK recently delivered Limitor Electric Valve Actuators for Velan, Powell and Newco gate valves existing at Bisen Energy Cogeneration Plant in Bursa. The order was received from BWG Babcock Wilcox Gama Boiler Tech.Co.Inc. Adaptation and installation of the actuators was performed by Odak Retrofit Team. Totally 34 pcs of actuators were delivered. Valve sizes were from 6 inch to 20 inch, ratings were from 300 lb to 1500 lb.

ODAK completed the order of various sizes of butterfly and single seat control valves from Siemens AG.

Siemens AG preferred **ODAK** and Limitor® for his turnkey sugar factory automation projects in Turkey.

ODAK supplied stainless steel oxygen valves in rating DN 300-PN 40 to Isdemir, Iskenderun Iron and Steel Factories Inc.

ODAK recently got the order of various manual and motorized sluice gates from the constructors of Municipalities Bank of Turkey for using water

systems.

REFERENCES

REFERENCES

Below you will find the list which covers some of the well known industrial enterprices and constructors **ODAK** supplied:



Siemens AG (Germany)

-Eregli Sugar Factory Automation.
-Afyon Sugar Factory Automation.
-Corum Sugar Factory Automation.
-Konya Sugar Factory Automation.
-Kayseri Sugar Factory Automation.
-Amasya Sugar Factory Automation.
Valves were butterfly, ball and single seated control valve types.
Sizes: From 2" to 20"
Rating: PN 16
Quantity: Approximately 900 pieces with electric and pneumatic actuators.

Bursa Bisen Energy Cogeneration Power Plant

(BWG Babcock Wilcox Gama Boiler Tech.Co.Inc.)
Electric Motor Actuators for Velan, Powell and Newco valves.
Size: 6" to 20"
Rating: Up to 1500 lb.

Izmir Cesme Drinking Water Cleaning Plant (OBA Insaat A.S.)

Penstocks and Butterfly Valves with Electric Motor Actuators.
Size: 600 mm x 800 mm, DN 800
Rating: PN 10

Bursa Erdek Drinking Water Cleaning Plant (OZDEN Insaat A.S.)

Penstocks and Butterfly Valves with Electric Motor Actuators.
Size: 600 mm x 600 mm, DN 700
Rating: PN 10

Eregli Iron and Steel Factories (Pasiner A.S.)

Gas dampers with electric motor actuators.
Size: 900 mm
Rating: PN 6

Karabuk Iron and Steel Factories (Cimtek A.S.)

Butterfly valves for gas service.
Size: DN1600 and DN 1600

Rating: PN 6

Iskenderun Iron and Steel Factories

Electric motor actuators, butterfly valves PN 16 DN 800, double and single seated control valves for oxygen service.

Size: DN 300

Rating: PN 40

Soma B Thermal Power Plant - Gama Endustri A.S. (Gama A.S.)

Gate valves with electric motor actuator for fire water lines.

Size: DN 400

Rating: PN 25

Petkim Petrochemical Complexes - Aliaga Izmir

Pneumatic actuated single seated control valves.

Size: DN 65

Rating: PN 40

Adana Incirlik American Hospital (Intes A.S.)

Gas dampers for CBR filters.

Size: DN 950

Rating: PN 4

Adana Incirlik American Airforce Buildings(Intes A.S.)

Ball valves with electric actuators for drinking water lines.

Size: Up to DN 200

Rating: PN 40

Zonguldak Drinking Water Cleaning System (Pasiner A.S.)

Pneumatic and electric motor actuated butterfly valves, penstocks.

Size: Up to DN 1200

Rating: PN 10-16

Edirne Drinking Water Cleaning System (Pasiner A.S.)

Pneumatic and electric motor actuated butterfly valves, penstocks.

Size: Up to DN 1000

Rating: PN 10-16

Aydin Drinking Water Cleaning System (Aker Insaat A.S.)

Pneumatic and electric motor actuated butterfly valves, penstocks.

Size: Up to DN 800

Rating: PN 10

Ankara Cubuk Drinking Water Cleaning System (Egesam A.S.)

Butterfly valves with electric motor actuators.

Size: DN 400

Rating: PN 10

Eskisehir Drinking Water Cleaning System (Guris Insaat A.S.)

Butterfly valves with pneumatic actuators.

Size: DN 400

Rating: PN 25

Yalova Drinking Water Cleaning System (Polat Yol Yapi A.S.)

Butterfly valves with pneumatic actuators.

Size: Up to DN 1200

Rating: PN 16

Askale Cement Factory - Erzurum

Electric motor actuators.

Denizli Cement Factory (Gama Endustri A.S)

Knife gate valves with electric motor actuators.
Electric motor actuators for gas dampers DN 2400.

Bursa Cement Factory (Gama Endustri A.S.)

Ball valves with pneumatic actuators.

Corum Cement Factory (Cimtek A.S.)

Electric motor actuators for gas dampers.

Seka Aksu Pulp and Paper Factory (Cimtek A.S.)

Gas tight dampers with electric motor actuators.
Size: DN 2000
Rating: PN 4

Ankara Metro (Gama Guris Consorsium - Basak Insaat A.S.)

Ball control valves with electric motor actuators.
Size: 8"
Rating: PN 25

TPAO Batman Refinery

Pneumatic control valves.
Size: DN 200
Rating: PN 40

Tupras Kirikkale Refinery

Pneumatic control valves.

Marsa Margarin Sanayi A.S. - Adana

Pneumatic butterfly valves

Etibank Bandirma (Pasiner A.S.)

Electric motor actuators for gate valves.
Size: DN 2400
Rating: PN 6

Russia Syktyvkar Project (Gama A.S.)

Gate valves with electric motor actuators.
Size: Up to DN 150
Rating: PN 25

TRT Oran Complex - Power Center (Ersel Insaat A.S.)

Gate valves with electric motor actuators.
Size: Up to DN 400
Rating: PN 25

Russia Zavidova Project (EMT Erimtan Muteahhitlik A.S.)

Gate valves with electric motor actuators.
Size: Up to DN 200
Rating: PN 25

AVM International Ltd. - Norway (Mr.Egil Anderson)

Electric motor actuators for gate valves.

Mersin Drinking Water Cleaning System (Tera Ltd.Sti.)

Butterfly valves with electric actuators.
Size: Up to DN 1400
Rating: PN 10

CONTACT

ODAK Endüstri Kontrol Makina Sanayi ve Ticaret Ltd.Đti

42A Sk. No:48 Ostim 06370-ANKARA/TURKEY

Phone: 90 (312) 354 7352

Fax: 90 (312) 385 6015
